



# SPACED OUT

Michael and Jennifer Quigley's traditional stone house has grown with their family – evolving into an award-winning modern home.



STORY: **ELEANOR WILDE**  
PICTURES: **STEVE TAYLOR**



existing bathroom, and a new utility and separate snug could be formed where the study had previously stood.

This additional accommodation eliminated the need for a first floor sitting room, which has instead been transformed into a master bedroom and en suite shower room. The old master bedroom would be split to create a family bathroom and a bedroom for daughter Jessica, now five, while Patrick (7) would be able to keep his existing room.

"It was an ambitious project, but we could immediately see how it would transform the entire house," says Jennifer. "We'd toyed with the idea of just sticking another room on the back with a bedroom over the top of it, but Simon's design flowed far more logically from room to room."

Such dramatic alterations and improvements had an inevitable impact on the budget, and despite obtaining planning permission for the proposed design the Quigleys were undecided about whether they could afford to proceed. In the end the decision was made very quickly.

"We had a phone call one Monday to say that our preferred builders were unexpectedly available, and could start work immediately if we wanted," says Michael. "Two days later they were marking out the site and preparing to dig the foundations. It meant we had very little time to get organised."

The highly insulated timber frame extension has been tied to the original stone house and is clad in a combination of rendered blockwork and cedar boarding. Natural slate was chosen for the pitched roof, with a section of flat zinc roofing above the dining room completed by a specialist contractor. →

"Our house was perfect for us as a couple when we first bought it back in 1998, but once the children were born we soon realised that it simply didn't work for a family," Michael Quigley explains. "There was no real logic to the layout, we desperately needed another bedroom and the only bathroom was on the ground floor."

Built in the 1880s, the Quigleys' house is located on the outskirts of a peaceful village and is typical of those found in Galloway, with a slate roof and whitewashed stone walls. Rooms have been built into the roof space, creating a one-and-a-half-storey rectangular structure, and the layout was unconventional, with the sitting room and two bedrooms upstairs, an enormous utility room on the ground floor and a study/guest bedroom beside the kitchen.

"We had no firm ideas about how to improve the house or how much it was going to cost," says Jennifer. "It was really our architect, Simon Winstanley, who led the design. We explained that we wanted a fairly open plan layout with lots of glass, and he suggested building an L-shaped extension to the rear, containing a single-storey sitting room, a dining room and an open plan study."

The sitting room was designed on the same level as the raised rear garden, with stairs leading down to the new dining room creating a split-level arrangement. The oversized utility would become a guest bedroom beside the



The front of the house remains untouched, with white-washed stone walls, a slate roof and small windows. The exterior of the extension comprises natural slate, standing seam zinc roofs, cedar-clad and self-coloured render walls, together with high performance Scandinavian windows.







A Jøtul woodburning stove has pride of place in the new sitting room which has large glass doors opening out onto the patio.



This room required elements of structural steelwork and overlooks the mature garden through large, high-performance Scandinavian windows and sliding doors. A top-lit study, reached by a set of steps, resolves the junction between the higher garden level and the lower level of the original building.

The Quigleys remained living in the house throughout the build, creating a makeshift lounge in one of the bedrooms. Both Michael and Jennifer are doctors, working long hours, and the children were then aged just two and four.

"It's not something we'd particularly like to go through again," says Jennifer. "We only moved out once the upstairs floors were taken out and the heating system was being replaced, when we went on holiday for a week and then stayed with friends for a few days."

John Murray of Simon Winstanley Architects project-managed the work, organising regular meetings with the Quigleys and their builders to ensure that everything went to plan. The practice specialises in contemporary architecture and energy-conscious design, and was keen to ensure that the house would be highly insulated and energy efficient.



Structurally, the original building was in fairly good condition and Michael and Jennifer had previously replaced the small front windows – ensuring that the street facade remains virtually unchanged. Introducing large elements of timber framed glazing to the rear of the building, with sliding glass doors in the new sitting and dining rooms, has totally transformed the interior.

"It's so much brighter, and now we can really enjoy views of the garden which is what first drew us to the house," says Michael. "We inherited various mature fruit trees, and it's such a peaceful setting. Being able to step straight out onto the patio makes us feel far more connected to our surroundings."

The external slate patio was designed to match the slate floor in the new dining room, which has been laid by Michael's father in the same pattern. Bathroom tiling was completed by the family, who also tackled the external landscaping in order to keep costs down, and a friend constructed the curved decking which wraps around the new sitting room.

This glazed living space features a high ceiling, oak flooring and a stylish woodburning stove. "The Danish stove is a real focal point, and although it took time to decide where to position it, we love the way the flue rises up in the corner of the room between the two sets of glass doors," Jennifer explains.

"We did consider underfloor heating for the new part of the house, but in the end we opted for conventional radiators and had a new heating and hot water system installed."

John Murray helped the couple to choose their fixtures and fittings, sourcing catalogues and making suggestions. A local bathroom company supplied sanitaryware for the two new bathrooms on the first floor – including a walk-in shower for the master en suite – and practical blue rubber flooring was fitted in the children's bathroom.

"We took some of our ideas from magazines," says Jennifer. "They were a great source of inspiration for everything from tiles and floor finishes to the stove. We recently found a Cumbrian slate table for the patio, which is almost like a sculpture, and our builders made built-in bench seating for the dining room. Michael painted it purple and the seat is actually a lid which lifts up to reveal storage space."

Ultimately the Quigleys spent just over £100,000 extending, remodelling and upgrading their home. Externally the original stone building has retained its character, but inside the house is virtually unrecognisable. "We've never liked boxy developer-built houses," says Michael. "Now we have enough space for the whole family and a fantastic garden. What more could we ask for?"

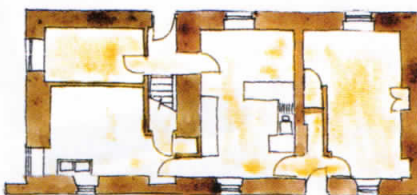
The original cabinets have been retained in the kitchen, which now opens into the new dining room beyond. The dining room has slate flooring and grey painted windows to echo the soft grey cedar cladding and the slate patio outside.



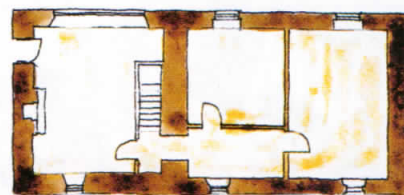
**THE BOTTOM LINE** Michael and Jennifer paid £115,000 for their house in 1998 and spent £100,000 extending and remodelling the property, which is currently valued at £240,000.

## BEFORE

GROUND FLOOR



FIRST FLOOR



## AFTER

GROUND FLOOR



FIRST FLOOR



The fireplace was taken out of the first floor lounge and the room has become an en suite master bedroom, with stripped wooden floors, which enjoys views of the rear garden. The children's bathroom was created by sub-dividing an existing bedroom.

## THE FLOOR PLAN

An L-shaped single storey extension contains the new sitting room and dining room. Stairs lead up from the dining area into a new open plan study. There's a playroom/snug and utility in the former study and the old utility room has become a guest bedroom beside the existing bathroom. Upstairs, the sitting room is now an en suite master bedroom and the old master bedroom has been divided into a family bathroom and a bedroom for Jessica.

## USEFUL CONTACTS

- **Architect** Simon Winstanley Architects: [www.GallowayArchitects.com](http://www.GallowayArchitects.com)
- **Builder** PRS Building Contractors: 01556 600351
- **Windows** NorDan: [www.nordan.co.uk](http://www.nordan.co.uk)
- **Shower** Matki plc: 01454 322888, [www.matki.co.uk](http://www.matki.co.uk)
- **Paint** Farrow & Ball: [www.farrowandball.co.uk](http://www.farrowandball.co.uk)
- **Woodburner** Jøtul: [www.jotul.com](http://www.jotul.com)
- **Slate floors/mosaics** The Original Tile Company: 0141 353 3332
- **Rubber flooring** Dalsouple: 01278 727733, [www.dalsouple.com](http://www.dalsouple.com)
- **Slate garden table** A World of Stone: [www.rrstone.co.uk](http://www.rrstone.co.uk)
- **Slate patio** B&Q: [www.diy.com](http://www.diy.com)
- **Dining room light** Cotterell Light Centres: [www.cotterell-lightcentres.co.uk](http://www.cotterell-lightcentres.co.uk)
- **Furniture** John Lewis: [www.johnlewis.com](http://www.johnlewis.com)
- **Sanitaryware/accessories** Ideal Standard: [www.idealstandard.co.uk](http://www.idealstandard.co.uk)
- **Bath** Bette: [www.bette.co.uk](http://www.bette.co.uk)



## FINAL THOUGHTS

### WHAT WAS THE HIGH POINT OF THE PROJECT?

Seeing the digger excavating new foundations felt like a major step, and then putting up coat hooks at the end of the project was also a significant point. Suddenly we felt as though we'd finished.

### ...AND THE LOW POINT

We went away on holiday and expected the heating and floors to be finished when we got back, but ended up having to stay with friends for another week because the house wasn't habitable.

### WHAT WAS YOUR BIGGEST EXTRAVAGANCE?

The 200mm wide oak floorboards were imported from Germany and were our biggest outlay at £1,900.

### ...AND YOUR BEST BUY?

The Jøtul woodburner, which we found online for £1,000.

### ANY FUTURE PLANS FOR THE HOUSE?

We'll probably need to re-slate the old roof at some point in the future and plan to replace the kitchen cabinets.

### DO YOU HAVE A TOP TIP?

Find an architect you like and who understands you – it makes the whole project far easier and more enjoyable. Our architect was recommended to us and was extremely approachable and sympathetic.

